

MARINE GENSET GUIDE

POWER 
HOUSE

MARIN PRO

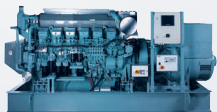
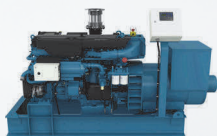
ONLINE MARINE GENSET CONFIGURATOR

Save time, money, and nerves

Easy to use and ready within a few clicks.

Choose your configuration and instantly download a complete technical documentation and quote for your next 70–2000 kW auxiliary engine or genset. It's simple, fast and completely free – no matter if you are building or designing a new vessel or looking for a documentation of your existing engines.

Access now on www.powerhouse.se



CONTENTS

WHO WE ARE	4
WHAT WE OFFER POWER	5
HOUSE GENSETS	6
CONTACT US	33

MARINE GENSET GUIDE

Model	Power Range (kWe)	Power Range (kVA)	Page
PHD8MG	119-259	149-324	8
PHD13MG EPA	248-343	310-429	10
PHD13MG EPA	300-380	375-475	12
PHD13MG	248-343	310-429	14
PHD13MG	300-380	375-475	16
PHD16MG	392-559	490-698	18
PHS6R	503-603	653-754	20
PHS6R2	476-612	595-765	22
PHS12A2	662-790	828-988	24
PHS12R	785-1223	981-1529	26
PHS16R	1070-1633	1309-2041	28
PHS16R2	1457-1886	1821-2358	30

WHO WE ARE

Sweden based Power House is your one-stop-shop partner for marine and industrial power solutions – from auxiliary engines and gensets to spare parts and after-sales services.

We officially represent Mitsubishi original products represented by MTEE B.V. and AB Volvo Penta Sweden and thus only offer reliable and recognized brands that meet your demands on global after-sales support, quality and reliability.

Because of our own and our supplier's dealer network we are able to provide also local support, commissioning and warranty services worldwide.

Count on us for high quality products and fast, reliable service and support.

POWERED BY



WHAT WE OFFER

Our product and service portfolio consists of the following:

- Marine auxiliary gensets
- Marine auxiliary engines
- Marine auxiliary variable speed gensets
- LNG marine auxiliary solutions
- Marine propulsion engines (for sale in Sweden only)
- Industrial engines
- Marine and industrial generators
- Sensors, switches and other miscellaneous equipment connected to our main products
- Spare parts and exchange products
- Commissioning and after-sales services

In addition to the standard configurations of gensets and auxiliary engines, we also offer customizations (e.g. gauges, air shut-offs, designated control systems, etc.) and consolidated deliveries (loose delivered equipment, e.g. battery boxes, power packs, etc.).

With regards to the sales and service support of marine and industrial engines and marine gensets, Power House conforms to and holds an ISO 9001, ISO 14001 and ISO 45001 certificate, as attested by Bureau Veritas.



POWER HOUSE GENSETS

Power House gensets combine a compact design with good service accessibility. They are available with a power range of 119 to 1886 kWe and with three different cooling systems (keel cooled, heat exchanged or radiator cooled). Each genset is designed and built according to the rules of all major classification societies

PHD8-PHD16 RANGE AUXILIARY GENSET

All power ratings published are expressed in conformity with Prime Power ratings corresponding to ISO Standard Power for continuous operation. This relates to the supplying of electrical power at variable load with 70% load factor for an unlimited number of hours. A 10% overload capability is available with this rating.

DIESEL ELECTRIC PROPULSION

Application type: Vessels operating with marine gensets for power to electric propulsion systems. Engine can be run for an unlimited number of running hours at a load factor of <80% of published Prime Power, 110% capability is available for a maximum of 1 hour per 12 hours operation for this rating. Ratings correspond to ISO Standard Power for continuous operation.

PHS6-PHS16 RANGE AUXILIARY GENSET

Main Power Supply

Typical Operation: Average load factor is 60–80% of rated power. Operating hours are 3000–4000 hours per year.
Momentary overload: 110% is available for governing purpose.

Emergency Power Supply

Typical Operation: Average load factor is 60% of rated power. Operating hours are up to 500 hours per year.
Overload: 110% can be used for less than 25 hours/year.

DIESEL ELECTRIC PROPULSION

Typical Operation: Average load factor is 60–80% of rated power. Operating hours are 3000–6000 hours per year.
Momentary overload: 110% is available for maximum 25 hours per year on emergency basis. 100% of rated power is available for maximum of 3 hours per every 12 hours operation period.
Typical Vessel Application: Offshore vessels, inland cargo vessels and ferries.

POWER HOUSE PHD8MG

IMO Tier 2 and 3
emission certified



GENERAL DATA

PHD8MG, Volvo Penta, Stamford generator 6-cylinder, 4 cycle, water cooled, diesel engine. Turbocharged with air cooler.
Can be delivered with complete SCR system.

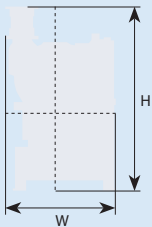
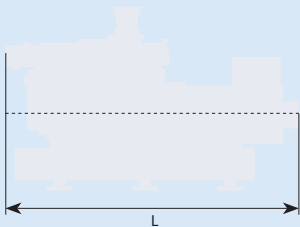
Bore x Stroke (mm): 110 x 135
Displacement (L): 7,7

POWER AT 1500 RPM, 50Hz, 400V

	kWe	kVA	Fuel cons.*
HEAT EXCHANGED			
UCM274G	119	149	205
UCM274H	136	170	205
S4L1MC41	168	210	204
S4L1MD41	184	230	204
S4L1ME41	220	275	205
S4L1MF41	225	281	207
KEEL COOLED			
UCM274G	119	149	205
UCM274H	136	170	205
S4L1MC41	168	210	204
S4L1MD41	184	230	204
S4L1ME41	220	275	205
S4L1MF41	225	281	207

*Fuel consumption IMO2; Unit: g/kWh

Available in:
380/400/415/440/690 V



COMMERCIAL RATING

Engine Speed	Frequency	Engine Power
1500 RPM	50 Hz	239 kWm
1800 RPM	60 Hz	275 kWm

POWER AT 1800 RPM, 60Hz, 440V

	kWe	kVA	Fuel cons.*
HEAT EXCHANGED			
UCM274G	149	186	207
UCM274H	170	213	207
S4L1MC41	196	245	206
S4L1MD41	216	270	207
S4L1ME41	259	324	209
S4L1MF41	259	324	209
KEEL COOLED			
UCM274G	149	186	207
UCM274H	170	213	207
S4L1MC41	196	245	206
S4L1MD41	216	270	207
S4L1ME41	259	324	209
S4L1MF41	259	324	209

*Fuel consumption; Unit: g/kWh

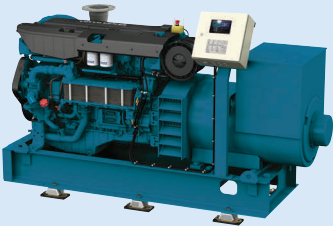
Available in:
416/440/460/480/600/690V

PRODUCT DIMENSIONS & DRY WEIGHT

L (mm):	2259 - 2603
W (mm):	1051
H (mm):	1650
Dry weight (kg):	n/a

POWER HOUSE

PHD13MG EPA



GENERAL DATA

PHD13MG, Volvo Penta, Stamford generator.
6-cylinder, 4 cycle, water cooled, diesel engine.
Turbocharged with air cooler, EPA emission certificate.

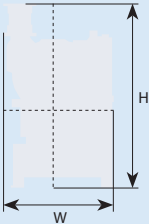
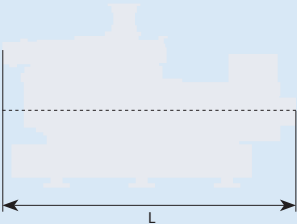
Bore x Stroke (mm): 131 x 158
Displacement (L): 12,78

POWER AT 1500 RPM, 50Hz, 300kWm, 400V

	kWe	kVA	Fuel cons.*
HEAT EXCHANGED			
S4L1MF41	248	310	203
S5L1MC41	284	355	203
S5L1MD41	285	356	203
KEEL COOLED			
S4L1MF41	248	310	203
S5L1MC41	284	355	203
S5L1MD41	285	356	203
RADIATOR COOLED			
S4L1MF41	248	310	204
S5L1MC41	275	344	203

Available in:
380/400/415/440/690 V

*Fuel consumption; Unit: g/kWh



COMMERCIAL RATING

Engine Speed	Frequency	Engine Power
1500 RPM	50 Hz	300 kWm
1500 RPM	50 Hz	360 kWm
1800 RPM	60 Hz	360 kWm (next page)
1800 RPM	60 Hz	400 kWm (next page)

POWER AT 1500 RPM, 50Hz, 360 kWm, 400V

	kWe	kVA	Fuel cons.*
HEAT EXCHANGED			
S5L1MC41	304	380	202
S5L1MD41	342	428	202
KEEL COOLED			
S5L1MC41	304	380	202
S5L1MD41	342	428	202
RADIATOR COOLED			
S5L1MC41	304	380	196
S5L1MD41	332	415	196

*Fuel consumption; Unit: g/kWh

Available in:

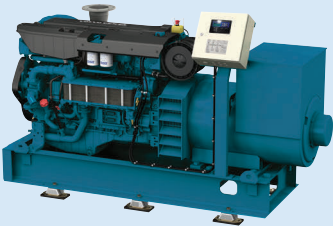
380/400/416/440/690 V

PRODUCT DIMENSIONS & DRY WEIGHT

L (mm):	2739 - 3219
W (mm):	1165 - 1174
H (mm):	1811 - 1814
Dry weight (kg):	3030 - 3315

POWER HOUSE

PHD13MG EPA



GENERAL DATA

PHD13MG, Volvo Penta, Stamford generator.
6-cylinder, 4 cycle, water cooled, diesel engine.
Turbocharged with air cooler, EPA emission certificate.

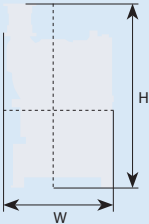
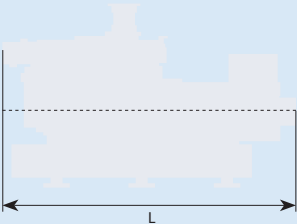
Bore x Stroke (mm): 131 x 158
Displacement (L): 12,78

POWER AT 1800 RPM, 60Hz, 360kWm, 440V

	kWe	kVA	Fuel cons.*
HEAT EXCHANGED			
S4L1MF41	300	375	214
S5L1MC41	341	426	215
S5L1MD41	342	428	215
KEEL COOLED			
S4L1MF41	300	375	214
S5L1MC41	341	426	215
S5L1MD41	342	428	215
RADIATOR COOLED			
S4L1MF41	300	375	204
S5L1MC41	323	404	216

*Fuel consumption; Unit: g/kWh

Available in:
416/440/460/480/600/690 V



COMMERCIAL RATING

Engine Speed	Frequency	Engine Power
1500 RPM	50 Hz	300 kWm (previous page)
1500 RPM	50 Hz	360 kWm (previous page)
1800 RPM	60 Hz	360 kWm
1800 RPM	60 Hz	400 kWm

POWER AT 1800 RPM, 60Hz, 400 kWm, 440V

	kWe	kVA	Fuel cons.*
HEAT EXCHANGED			
S5L1MC41	360	450	211
S5L1MD41	380	475	209
KEEL COOLED			
S5L1MC41	360	450	211
S5L1MD41	380	475	209
RADIATOR COOLED			
S5L1MC41	360	450	206
S5L1MD41	362	453	206

*Fuel consumption; Unit: g/kWh

Available in:

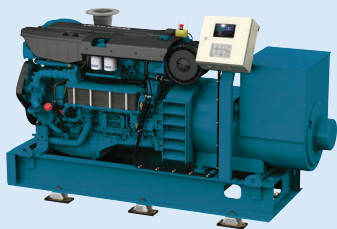
416/440/460/480/600/690 V

PRODUCT DIMENSIONS & DRY WEIGHT

L (mm):	2739 - 3219
W (mm):	1165 - 1174
H (mm):	1811 - 1814
Dry weight (kg):	3030 - 3315

POWER HOUSE PHD13MG

IMO Tier 2 and 3
emission certified



GENERAL DATA

PHD13MG, Volvo Penta, Stamford generator.
6-cylinder, 4 cycle, water cooled, diesel engine.
Turbocharged with air cooler.
Can be delivered with complete SCR system.

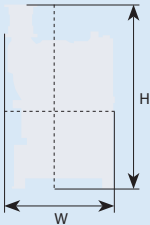
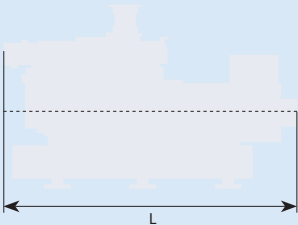
Bore x Stroke (mm): 131 x 158
Displacement (L): 12,78

POWER AT 1500 RPM, 50Hz, 300kWm, 400V

	kWe	kVA	Fuel cons.*
HEAT EXCHANGED			
S4L1MF41	248	310	194
S5L1MC41	284	355	194
S5L1MD41	332	415	194
KEEL COOLED			
S4L1MF41	248	310	194
S5L1MC41	284	355	194
S5L1MD41	332	415	194
RADIATOR COOLED			
S4L1MF41	248	310	194
S5L1MC41	275	344	194

*Fuel consumption; Unit: g/kWh

Available in:
380/400/415/440/690 V



COMMERCIAL RATING

Engine Speed	Frequency	Engine Power
1500 RPM	50 Hz	300 kWm
1500 RPM	50 Hz	360 kWm
1800 RPM	60 Hz	360 kWm (next page)
1800 RPM	60 Hz	400 kWm (next page)

POWER AT 1500 RPM, 50Hz, 360 kWm, 400V

	kWe	kVA	Fuel cons.*
HEAT EXCHANGED			
S5L1MC41	304	380	190
S5L1MD41	342	428	191
KEEL COOLED			
S5L1MC41	304	380	190
S5L1MD41	342	428	191
RADIATOR COOLED			
S5L1MC41	304	380	191
S5L1MD41	332	415	191

*Fuel consumption; Unit: g/kWh

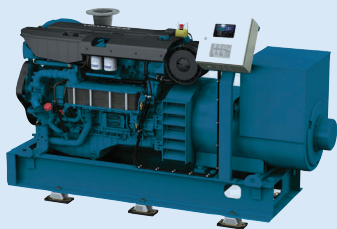
Available in:
380/400/415/440/690 V

PRODUCT DIMENSIONS & DRY WEIGHT

L (mm):	2739 - 3219
W (mm):	1165 - 1174
H (mm):	1811 - 1814
Dry weight (kg):	3030 - 3315

POWER HOUSE PHD13MG

IMO Tier 2 and 3
emission certified



GENERAL DATA

PHD13MG, Volvo Penta, Stamford generator.
6-cylinder, 4 cycle, water cooled, diesel engine.
Turbocharged with air cooler.
Can be delivered with complete SCR system.

Bore x Stroke (mm): 131 x 158
Displacement (L): 12,78

POWER AT 1800 RPM, 60Hz, 360kWm, 440V

	kWe	kVA	Fuel cons.*
HEAT EXCHANGED			
S4L1MF41	300	375	200
S5L1MC41	341	426	200
S5L1MD41	342	428	200
KEEL COOLED			
S4L1MF41	300	375	200
S5L1MC41	341	426	200
S5L1MD41	342	428	200
RADIATOR COOLED			
S4L1MF41	300	375	200
S5L1MC41	323	404	200

*Fuel consumption; Unit: g/kWh

Available in:
416/440/460/480/600/690V



COMMERCIAL RATING

Engine Speed	Frequency	Engine Power
1500 RPM	50 Hz	300 kWm (previous page)
1500 RPM	50 Hz	360 kWm (previous page)
1800 RPM	60 Hz	360 kWm
1800 RPM	60 Hz	400 kWm

POWER AT 1800 RPM, 60Hz, 400 kWm, 440V

	kWe	kVA	Fuel cons.*
HEAT EXCHANGED			
S5L1MC41	360	450	198
S5L1MD41	380	475	199
KEEL COOLED			
S5L1MC41	360	450	198
S5L1MD41	380	475	199
RADIATOR COOLED			
S5L1MC41	360	450	199
S5L1MD41	362	453	199

*Fuel consumption; Unit: g/kWh

Available in:

416/440/460/480/600/690V

PRODUCT DIMENSIONS & DRY WEIGHT

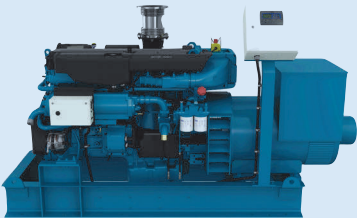
L (mm):	2739 - 3219
W (mm):	1165 - 1174
H (mm):	1811 - 1814
Dry weight (kg):	3030 - 3315

POWER HOUSE

PHD16MG

IMO Tier 2 and 3

emission certified



GENERAL DATA

PHD16MG, Volvo Penta, Stamford generator.
6-cylinder, 4 cycle, water cooled, diesel engine.
turbocharged with air cooler.
Can be delivered with complete SCR system.

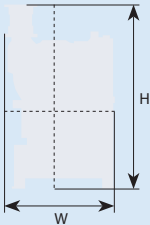
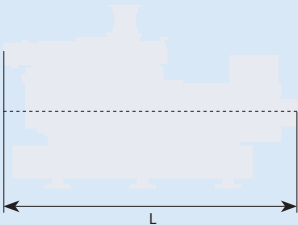
Bore x Stroke (mm): 144 x 165
Displacement (L): 16,12

POWER AT 1500 RPM, 50Hz, 400V

	kWe	kVA	Fuel cons.*
HEAT EXCHANGED			
S5L1ME41	392	490	193
S5L1MF41	420	525	193
S6L1MF41	507	634	193
KEEL COOLED			
S5L1ME41	392	490	193
S5L1MF41	420	525	193
S6L1MF41	507	634	193
RADIATOR COOLED			
S5L1ME41	392	490	193
S5L1MF41	420	525	193
S6L1MC41	491	613	193

*Fuel consumption; Unit: g/kWh

Available in:
380/400/415/440/690 V



COMMERCIAL RATING

Engine Speed	Frequency	Engine Power
1500 RPM	50 Hz	532 kWm
1800 RPM	60 Hz	585 kWm

POWER AT 1800 RPM, 60Hz, 440V

	kWe	kVA	Fuel cons.*
HEAT EXCHANGED			
S5L1ME41	470	588	198
S5L1MF41	515	644	198
S6L1M-C4	559	698	198
KEEL COOLED			
S5L1ME41	470	588	198
S5L1MF41	515	644	198
S6L1M-C4	559	698	198
RADIATOR COOLED			
S5L1ME41	470	588	198
S5L1MF41	515	644	198
S6L1MC41	532	665	198

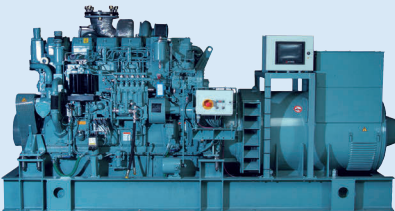
*Fuel consumption; Unit: g/kWh

Available in:

416/440/460/480/600/690V

PRODUCT DIMENSIONS & DRY WEIGHT

L (mm):	3122 - 3606
W (mm):	1167 - 1380
H (mm):	1840 - 2055
Dry weight (kg):	3771 - 4445



GENERAL DATA

PHS6R-Z3MPTAW, Mitsubishi, Stamford generator.
6-cylinder, 4 cycle, water cooled, diesel engine.
Turbocharged with air cooler.
Can be delivered with complete SCR system.

Bore x Stroke (mm): 170 x 180
Displacement (L): 24,51

POWER AT 1500 RPM, 50Hz, 400V

	kWe	kVA	Fuel cons.*
HEAT EXCHANGED			
HCM634H2	522	653	207
KEEL COOLED			
HCM634H2	522	653	207
RADIATOR COOLED			
HCM634H2	503	623	207

DIESEL ELECTRIC POWER AT 1500 RPM, 50Hz, 400V

	kWe	kVA	Fuel cons.*
HEAT EXCHANGED			
HCM634H2	522	653	207
KEEL COOLED			
HCM634H2	522	653	207

*Fuel consumption; Unit: g/kWh

Available in:
380/400/415/440/690 V



COMMERCIAL RATING

Engine Speed	Frequency	Engine Power
1500 RPM	50 Hz	545 kWm
1800 RPM	60 Hz	635 kWm

POWER AT 1800 RPM, 60Hz, 440V

	kWe	kVA	Fuel cons.*
HEAT EXCHANGED			
HCM634G2	603	754	220
KEEL COOLED			
HCM634G2	603	754	220
RADIATOR COOLED			
HCM634G2	577	721	220

DIESEL ELECTRIC POWER AT 1800 RPM, 60Hz, 440V

	kWe	kVA	Fuel cons.*
HEAT EXCHANGED			
HCM634G2	548	685	n/a
KEEL COOLED			
HCM634G2	548	685	n/a

*Fuel consumption; Unit: g/kWh

Available in:

416/440/460/480/600 V

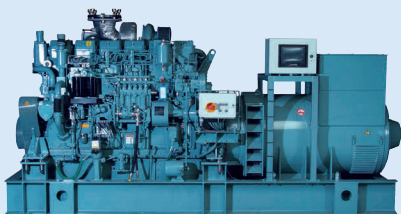
PRODUCT DIMENSIONS & DRY WEIGHT

L (mm):	3564 - 4575*
W (mm):	1614 - 1752*
H (mm):	1801 - 2448*
Dry weight (kg):	5800

*May differ due to choice of cooling system and alternator.

POWER HOUSE PHS6R2

IMO Tier 2 and 3
emission certified



GENERAL DATA

PHS6R2-T2MPTK, Mitsubishi, Stamford generator.
6-cylinder, 4 cycle, water cooled, diesel engine.
Turbocharged with air cooler.
Can be delivered with complete SCR system.

Bore x Stroke (mm): 170 x 220
Displacement (L): 29,96

POWER AT 1500 RPM, 50Hz, 400V

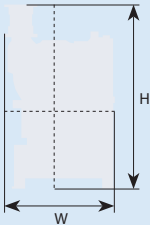
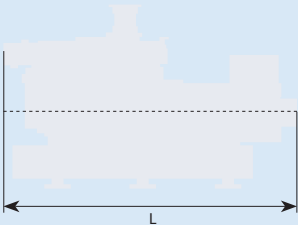
	kWe	kVA	Fuel cons.*
HEAT EXCHANGED			
HCM634H2	612	765	210
KEEL COOLED			
HCM634H2	612	765	210

DIESEL ELECTRIC POWER AT 1500 RPM, 50Hz, 400V

	kWe	kVA	Fuel cons.*
HEAT EXCHANGED			
HCM634H2	612	765	210
KEEL COOLED			
HCM634H2	612	765	210

*Fuel consumption; Unit: g/kWh

Available in:
380/400/415/440/690 V



COMMERCIAL RATING

Engine Speed	Frequency	Engine Power
1500 RPM	50 Hz	640 kWm
1200 RPM	60 Hz	610 kWm

POWER AT 1200 RPM, 60Hz, 440V

	kWe	kVA	Fuel cons.*
HEAT EXCHANGED			
HCM636K2	476	595	197
KEEL COOLED			
HCM636K2	476	595	197

DIESEL ELECTRIC POWER AT 1200 RPM, 60Hz, 440V

	kWe	kVA	Fuel cons.*
HEAT EXCHANGED			
HCM636K2	476	595	197
KEEL COOLED			
HCM636K2	476	595	197

DIESEL ELECTRIC POWER AT 1200 RPM, 60Hz, 440V

	kWe	kVA	Fuel cons.*
HEAT EXCHANGED			
PM736B2	582	728	197
KEEL COOLED			
PM736B2	582	728	197

*Fuel consumption; Unit: g/kWh

Available in:

416/440/460/480/600 V

PRODUCT DIMENSIONS & DRY WEIGHT

L (mm):	3843*
W (mm):	1457*
H (mm):	1964*
Dry weight (kg):	6000

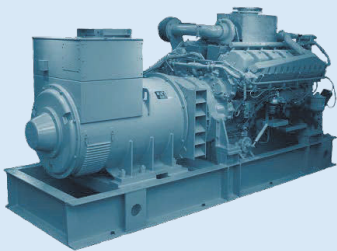
*May differ due to choice of cooling system and alternator.

POWER HOUSE

PHS12A2

IMO Tier 2 and 3

emission certified



GENERAL DATA

PHS12A2-MPTAW, Mitsubishi, Stamford generator.
12-cylinder, 4 cycle, water cooled, diesel engine.
Turbocharged with air cooler.
Can be delivered with complete SCR system.

Bore x Stroke (mm): 150 x 160
Displacement (L): 33,93

POWER AT 1500 RPM, 50Hz, 400V

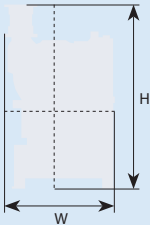
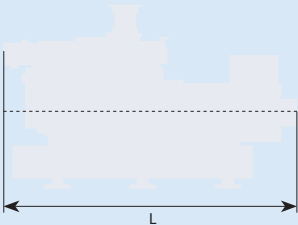
	kWe	kVA	Fuel cons.*
HEAT EXCHANGED			
HCM634J2	678	848	207
KEEL COOLED			
HCM634J2	678	848	207
RADIATOR COOLED			
HCM634J2	662	828	207

DIESEL ELECTRIC POWER AT 1500 RPM, 50Hz, 400V

	kWe	kVA	Fuel cons.*
HEAT EXCHANGED			
HCM634J2	678	848	207
KEEL COOLED			
HCM634J2	678	848	207

*Fuel consumption; Unit: g/kWh

Available in:
380/400/415/440/690 V



COMMERCIAL RATING

Engine Speed	Frequency	Engine Power
1500 RPM	50 Hz	709 kWm
1800 RPM	60 Hz	828 kWm

POWER AT 1800 RPM, 60Hz, 440V

	kWe	kVA	Fuel cons.*
HEAT EXCHANGED			
HCM634J2	790	988	207
KEEL COOLED			
HCM634J2	790	988	207
RADIATOR COOLED			
HCM634J2	764	955	207

DIESEL ELECTRIC POWER AT 1800 RPM, 60Hz, 440V

	kWe	kVA	Fuel cons.*
HEAT EXCHANGED			
HCM634J2	718	898	206
KEEL COOLED			
HCM634J2	718	898	206

*Fuel consumption; Unit: g/kWh

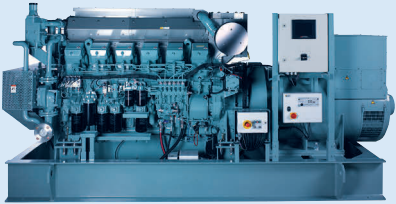
Available in:

416/440/460/480/600 V

PRODUCT DIMENSIONS & DRY WEIGHT

L (mm):	3703*
W (mm):	1818*
H (mm):	1934*
Dry weight (kg):	7500

*May differ due to choice of cooling system and alternator.



GENERAL DATA

PHS12R-MPTAW, Mitsubishi, Stamford generator.
12-cylinder, 4 cycle, water cooled, diesel engine.
Turbocharged with air cooler.
Can be delivered with complete SCR system.

Bore x Stroke (mm): 170 x 180
Displacement (L): 49,03

POWER AT 1500 RPM, 50Hz, 400V

	kWe	kVA	Fuel cons.*
HEAT EXCHANGED			
PM734E2	1081	1351	209
KEEL COOLED			
PM734E2	1081	1351	209
RADIATOR COOLED			
PM734E2	1051	1314	209

DIESEL ELECTRIC PROPULSION AT 1500 RPM, 50Hz, 400V

	kWe	kVA	Fuel cons.*
HEAT EXCHANGED			
PM734E2	1081	1351	209
KEEL COOLED			
PM734E2	1081	1351	209

*Fuel consumption; Unit: g/kWh

Available in:
380/400/415/440/690 V



COMMERCIAL RATING

Engine Speed	Frequency	Engine Power
1500 RPM	50 Hz	1120 kWm
1800 RPM	60 Hz	1270 kWm
1200 RPM	60 Hz	840 kWm

POWER AT 1800 RPM, 60Hz, 440V

	kWe	kVA	Fuel cons.*
HEAT EXCHANGED			
PM734E2	1223	1529	220
KEEL COOLED			
PM734E2	1223	1529	220
RADIATOR COOLED			
PM734E2	1172	1465	220

POWER AT 1200 RPM, 60Hz, 440V

	kWe	kVA	Fuel cons.*
HEAT EXCHANGED			
PM736F2	799	999	197
KEEL COOLED			
PM736F2	799	999	197
RADIATOR COOLED			
PM736F2	785	981	197

DIESEL ELECTRIC PROPULSION AT 1800 RPM, 60Hz, 440V

	kWe	kVA	Fuel cons.*
HEAT EXCHANGED			
PM734E2	1108	1385	220
KEEL COOLED			
PM734E2	1108	1385	220

DIESEL ELECTRIC PROPULSION AT 1200 RPM, 60Hz, 440V

	kWe	kVA	Fuel cons.*
HEAT EXCHANGED			
PM736F2	799	999	197
KEEL COOLED			
PM736F2	799	999	197

*Fuel consumption; Unit: g/kWh

Available in:

416/440/460/480/600 V

PRODUCT DIMENSIONS & DRY WEIGHT

L (mm):	4162 - 4220*
W (mm):	1772 - 1832*
H (mm):	2366 - 2379*
Dry weight (kg):	10 300 - 11 300

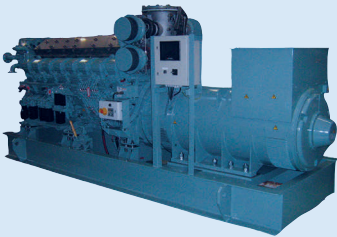
*May differ due to choice of cooling system and alternator.

POWER HOUSE

PHS16R

IMO Tier 2 and 3

emission certified



GENERAL DATA

PHS16R-MPTAW, Mitsubishi, Stamford generator.
16-cylinder, 4 cycle, water cooled, diesel engine.
Turbocharged with air cooler.
Can be delivered with complete SCR system.

Bore x Stroke (mm): 170 x 180
Displacement (L): 65,37

POWER AT 1500 RPM, 50Hz, 400V

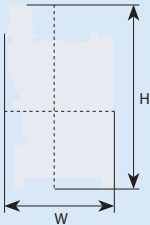
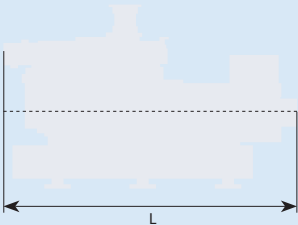
	kWe	kVA	Fuel cons.*
HEAT EXCHANGED			
PM734E2	1437	1796	211
KEEL COOLED			
PM734E2	1437	1796	211
RADIATOR COOLED			
PM734E2	1408	1760	211

DIESEL ELECTRIC PROPULSION AT 1500 RPM, 50Hz, 400V

	kWe	kVA	Fuel cons.*
HEAT EXCHANGED			
PM734E2	1437	1796	211
KEEL COOLED			
PM734E2	1437	1796	211

*Fuel consumption; Unit: g/kWh

Available in:
380/400/415/440/690 V



COMMERCIAL RATING

Engine Speed	Frequency	Engine Power
1500 RPM	50 Hz	1500 kWm
1800 RPM	60 Hz	1690 kWm
1200 RPM	60 Hz	1120 kWm

POWER AT 1800 RPM, 60Hz, 440V

	kWe	kVA	Fuel cons.*
HEAT EXCHANGED			
PM734G2	1633	2041	215
KEEL COOLED			
PM734G2	1633	2041	215
RADIATOR COOLED			
PM734G2	1578	1973	215

POWER AT 1200 RPM, 60Hz, 440V

	kWe	kVA	Fuel cons.*
HEAT EXCHANGED			
PM736G2	1070	1338	202
KEEL COOLED			
PM736G2	1070	1338	202
RADIATOR COOLED			
PM736G2	1047	1309	202

DIESEL ELECTRIC PROPULSION AT 1800 RPM, 60Hz, 440V

	kWe	kVA	Fuel cons.*
HEAT EXCHANGED			
PM734G2	1485	1856	n/a
KEEL COOLED			
PM734G2	1485	1856	n/a

DIESEL ELECTRIC PROPULSION AT 1200 RPM, 60Hz, 440V

	kWe	kVA	Fuel cons.*
HEAT EXCHANGED			
PM736G2	1070	1338	202
KEEL COOLED			
PM736G2	1070	1338	202

Available in:

*Fuel consumption; Unit: g/kWh

416/440/460/480/600 V

PRODUCT DIMENSIONS & DRY WEIGHT

L (mm):	4781 - 4821*
W (mm):	1721*
H (mm):	2249*
Dry weight (kg):	15 500

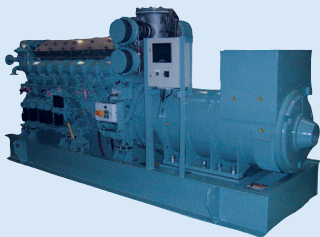
*May differ due to choice of cooling system and alternator.

POWER HOUSE

PHS16R2

IMO Tier 2 and 3

emission certified



GENERAL DATA

S16R-MPTAW, Mitsubishi, Stamford generator.
16-cylinder, 4 cycle, water cooled, diesel engine.
Turbocharged with air cooler.
Can be delivered with complete SCR system.

Bore x Stroke (mm): 170 x 220
Displacement (L): 65,37

POWER AT 1500 RPM, 50Hz, 400V

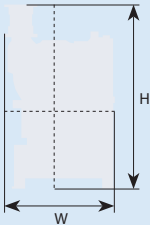
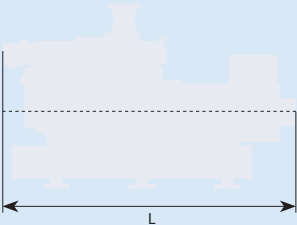
	kWe	kVA	Fuel cons.*
HEAT EXCHANGED			
DSG86M1/4W	1886	2358	208
KEEL COOLED			
DSG86M1/4W	1886	2358	208
RADIATOR COOLED			
DSG86M1/4W	1837	2296	208

DIESEL ELECTRIC PROPULSION AT 1500 RPM, 50Hz, 400V

	kWe	kVA	Fuel cons.*
HEAT EXCHANGED			
DSG86M1/4W	1886	2358	208
KEEL COOLED			
DSG86M1/4W	1886	2358	208

*Fuel consumption; Unit: g/kWh

Available in:
380/400/415/440/690 V



COMMERCIAL RATING

Engine Speed	Frequency	Engine Power
1500 RPM	50 Hz	1960 kWm
1800 RPM	60 Hz	1690 kWm
1200 RPM	60 Hz	1568 kWm

POWER AT 1200 RPM, 60Hz, 440V

	kWe	kVA	Fuel cons.*
HEAT EXCHANGED			
DSG86M1/6W	1505	1881	207
KEEL COOLED			
DSG86M1/6W	1505	1881	207
RADIATOR COOLED			
DSG86M1/6W	1457	1821	207

DIESEL ELECTRIC PROPULSION AT 1200 RPM, 60Hz, 440V

	kWe	kVA	Fuel cons.*
HEAT EXCHANGED			
DSG86M1/6W	1505	1881	207
KEEL COOLED			
DSG86M1/6W	1505	1881	207

*Fuel consumption; Unit: g/kWh

Available in:

416/440/460/480/600 V

PRODUCT DIMENSIONS & DRY WEIGHT

L (mm):	4781 - 4821*
W (mm):	1721*
H (mm):	2249*
Dry weight (kg):	15 500

*May differ due to choice of cooling system and alternator.

CONTACT US

SALES

Phone: +46 31-762 56 06
sales@powerhouse.se

SPARE PARTS

Phone: +46 31-762 56 03
parts@powerhouse.se

SERVICE

Phone: +46 31-762 56 11
service@powerhouse.se

ADMIN

Phone: +46 31-762 56 00
admin@powerhouse.se



**ISO 9001
ISO 14001
ISO 45001**

BUREAU VERITAS
Certification



POWER 
HOUSE